

Knorr 123 Chicken Noodle Soup 200 portions



Description

Dehydrated Chicken Noodle Soup Mix

Product Details

Article Code	19638103
Container	Bucket
Brand	KNORR

Benefits

- Knorr 1-2-3 soup is a range of popular varieties in dehydrated format. Using this product saves time and money, provides consistent quality, greater choice and convenience to the caterer.
- Bain Marie stable

Nutrition, Allergen and Additive information



Storage

Keep in a cool dry place. Reseal after use.

Shelf life

15 months

Preparation

DOSAGE:

Soup Powder 102g, water 1.7 litres (Makes 10 portions).

For more information contact us at info@unileverfoodsolutions.co.uk or call 0800 783 3728 (lines open Mon-Fri 8am-6pm).

Page 1

Entire pack, Water 34 litres (Makes 200 portions).

1. Ensure the product is well mixed before weighing out.
2. Stir the required amount of soup mix into cold water.
3. Bring to the boil, while stirring.
4. Simmer for approximately 4 minutes, whisking occasionally.
5. For best results, whisk thoroughly before serving.
6. Unused prepared portions must be refrigerated and used within 24 hours.

Allergens

- Cereals containing gluten
- Eggs and their derivatives
- May contain celery and its derivatives
- May contain milk and its derivatives

Additives

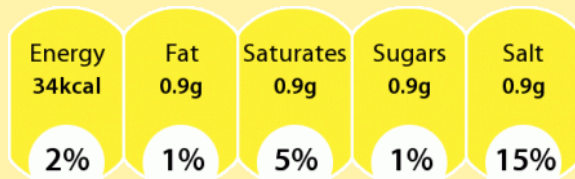
- No MSG added
- No added artificial colours
- No added artificial preservatives

Ingredients

Maltodextrin, EGG pasta [durum WHEAT semolina, dried EGG white, dried EGG yolk] (23%), potato starch, salt, flavourings (contain EGG, WHEAT, BARLEY), chicken (2.5%), sugar, chicken fat (2.5%), onion powder, yeast extract, citric acid, turmeric, parsley, antioxidant (extracts of rosemary). May contain milk and celery.

Reference Intake

Each 170 ml portion of Knorr 123 Chicken Noodle Soup
200 portions contains



% of Reference Intake of an average adult
(8400kJ/2000kcal)

Yield

34 Litres

Nutrition Information

Portion size = 170ml

Typical values	Per 100 g/ml	Per portion
Energy kJ	1500 kJ	153 kJ
Energy kcal	350 kcal	34 kcal
Fat	4.0 g	0.9 g
Saturates	0.6 g	0.9 g
Carbohydrate	70.0 g	6.8 g
Sugars	6.0 g	0.9 g
Fibre	0.9 g	0.9 g
Protein	7.0 g	0.9 g
Salt	43.00 g	0.90 g

% of reference intake of an average adult (8400 kJ / 2000 kcal)

Disclaimer: While every care has been taken to ensure this information is correct, our products are subject to formulation change including, without limitation, ingredient, allergen and nutrition content. The information is provided in good faith but is for general information purposes only. It should not be relied on for any specific purpose and no representation or warranty is given as regards its accuracy or completeness. Please do not rely solely on this information and always check the product label. Please see our Legal Terms and Privacy Policy (bottom of the website page).